

Sunrise Senior Living—Sonning

Sunrise Senior Living
Sonning

Sector
Accommodation

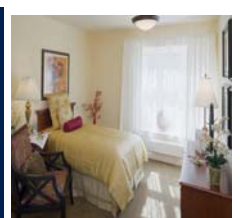
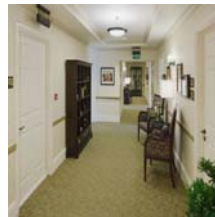
Client
Sunrise Senior Living

Contract Value
£11.3 million

Contract Period
September 2007 to December 2008

Contract Type
JCT 2005 Lump Sum

Gross Internal Floor Area
6042 m²





Project Details

Construction of an eighty room, high quality care home for the frail and elderly. Like all Sunrise Senior Living homes, Sonning has been built to a very high quality specification, providing a specialist Alzheimer and general units over three storeys. The building is set in beautiful, illuminated gardens will also include a grand entrance foyer, a bistro catering facility and social areas.

Our Solution:

This is the third contract we have been awarded by Sunrise Senior Living, the other two being the recently completed £9.5million Tettenhall project in the Midlands and a £10million luxury facility in Southampton. Both projects were completed on time and to budget, in line with the standards that we set ourselves on all projects.



We were initially asked to provide 8 resident model rooms with a protected walk way between the Marketing suite as part of our obligations to handover these areas 4 months ahead of practical completion for marketing the development to potential clients. However the site team in wanting to exceed the clients expectations targeted to complete the internal court yard in its entirety as part of the handover.



Client Reference

Sunrise Senior Living
Crofton House
16 Warwick Road
Beaconsfield
Buckinghamshire
HP9 2PE

Tel : 01494 739000
Fax : 01494 739002
Contact : Peter Gosling

Architect

Pope Priestley Associates

Project Manager

Baillie Knowles Partnership

Quantity Surveyor

Baillie Knowles Partnership

Structural Engineer

Clark Smith Partnership